

Flauto 1

FOLLIE DI DONNA

Walzer

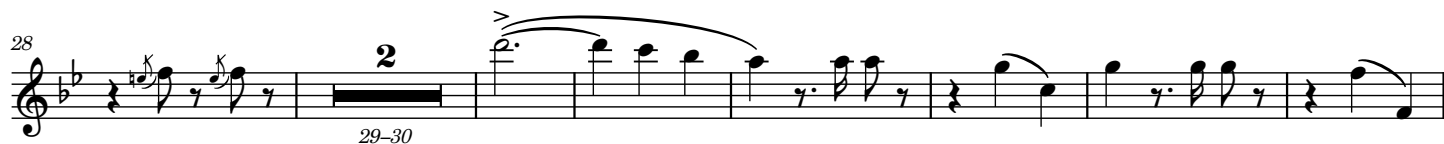
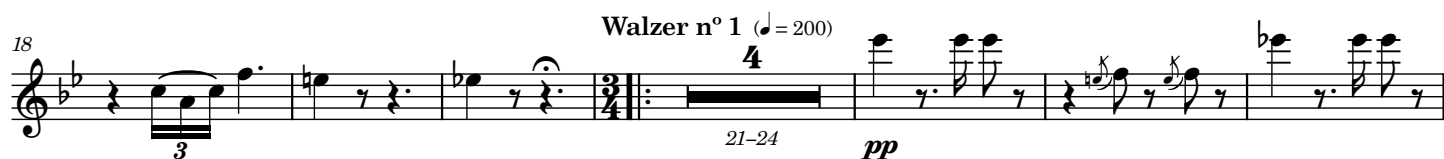
Durata circa 19'50"

Grado 4.5

Amilcare Ponchielli (1834 - 1886) Op. 122

Versione per banda sinfonica di Emiliano Gusperti

Andante moderato (♩ = 60)



75-76 79-80 *pp*

84 *pp*

91

96

102 *pp*

Walzer n° 3
109 *p con espressione* 113-116 *p*

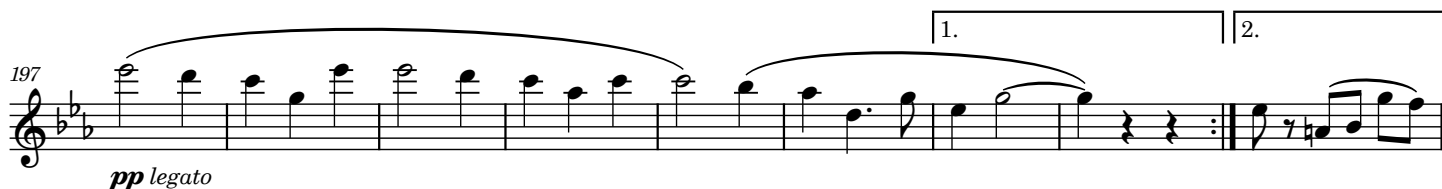
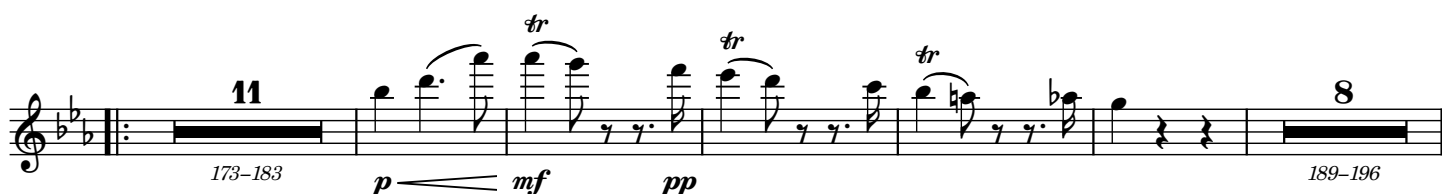
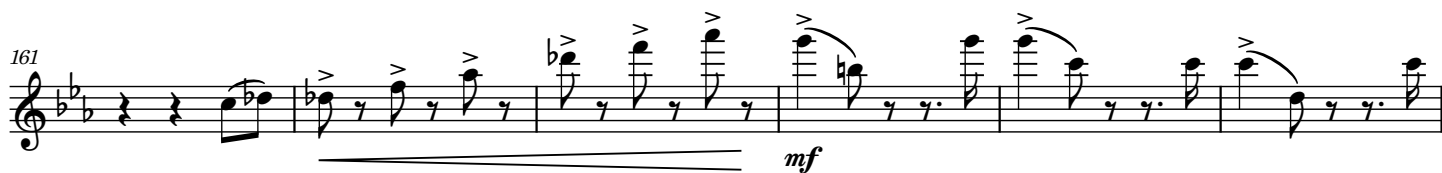
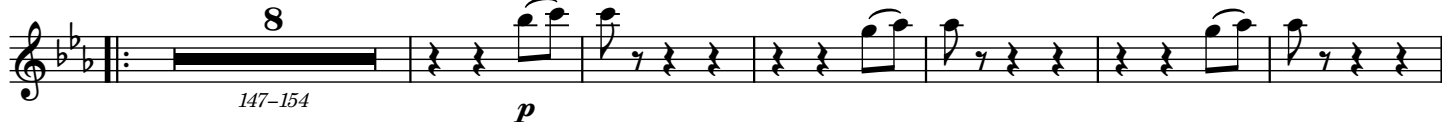
121 *pp*

129 *mf*

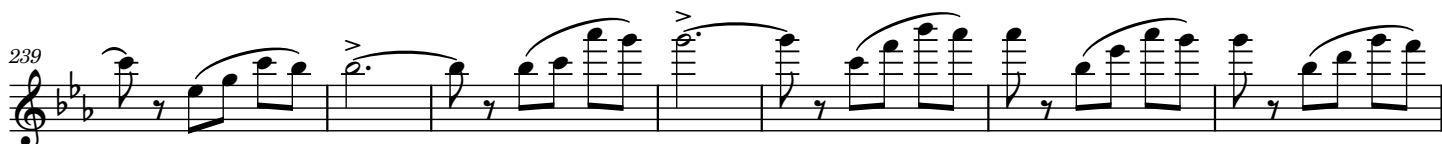
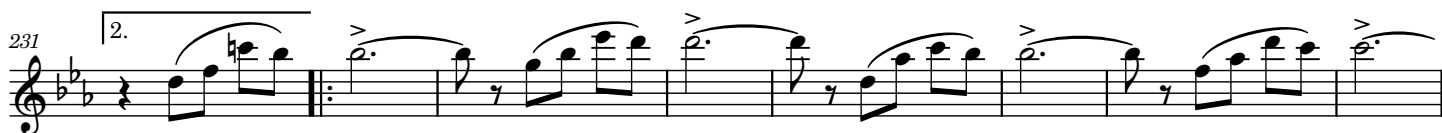
134 *pp*

140 *mf* 144-146

Walzer n° 4



Walzer n° 5



246 1. 2. Coda *pp cre*

253 *scen* *do*

261 *ff*

268 *poco rit.* *a tempo* 1 4 270-273 *pp*

277 2 278-279

4 286-289 *pp*

296 *mf* 3 302-304 *p*

306 *tr* 3 310-312 *p*

315 *tr* Valzer n° 2 2 318-319 *f* 2 322-323

324 *tr* **2** *pp* 326-327

332 *pp*

338

343

348 *tr* *p*

356 *cresc.*

363

stringendo

370 *ff* *tr*

377 *tr*

385 **1** **1**